

# Urgent Practice Data Survey

Curi McMA North Carolina Medical Society  
Leadership in Medicine

## Sixteen Week Summary Report

Survey data summary for the weeks of March 30th through July 20th.

### Survey User Demographics

# 2404

Total number of Urgent Practice Data Survey submissions.

# 82%

Percentage of practices surveyed that are independently owned.

# 86%

Percentage of practices surveyed that have 10 doctors or fewer.

# 80%

Percentage of NC counties represented in the survey data.

#### Top 5 Participating Counties:

1. Wake
2. Mecklenburg
3. Guilford
4. Buncombe
5. Catawba

# 51

Number of healthcare specialties represented.

#### Top 5 Participating Specialties:

1. Family Practice
2. Pediatric
3. Internal Medicine
4. OB/GYN
5. Multi-Specialty and Orthopaedic (Tie)

### Sixteen Week Summary

# TOP 3

practice concerns in the response to the COVID-19 pandemic.



1. Patient Volumes



2. Financial Concerns

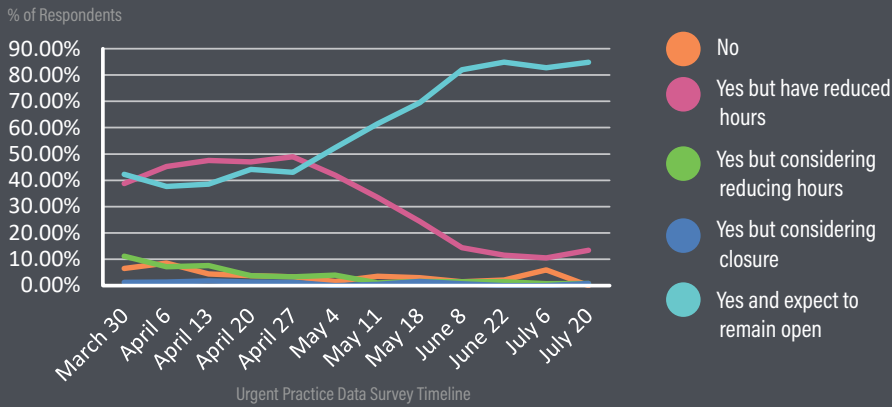


3. PPE Access

**METRICS ON THE MOVE:** In recent weeks, two concerns, not in the top three, have been experiencing increased respondent selection: "Staffing" increased from 5% (week of June 22nd) to 15% (week of July 20th) and "Access to COVID Testing" increased from 4% (week of June 22nd) to 10% (week of July 20th).

# Urgent Practice Data Survey Sixteen Week Summary

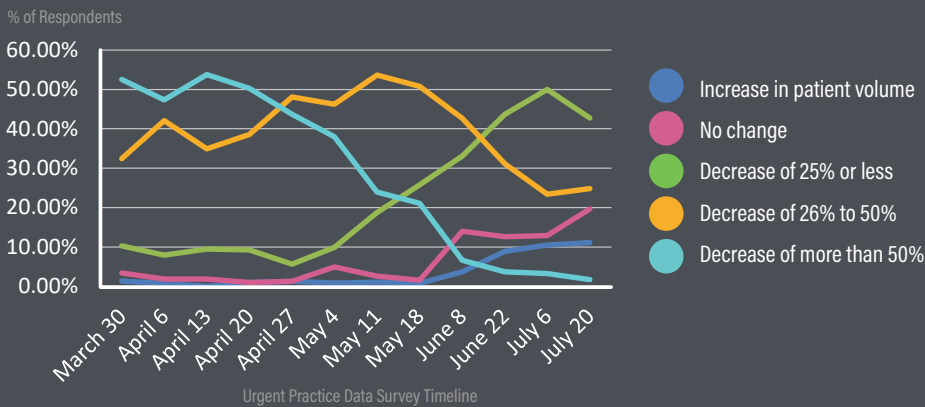
## Is your practice currently open and seeing patients?



### METRICS ON THE MOVE:

“Yes but have reduced hours” has dropped from 39% of the respondents in the week of March 30th to 13% for the week of July 20th, while “Yes and expect to remain open” has risen from 42% of the respondents in the week of March 30th to 85% for the week of July 20th.

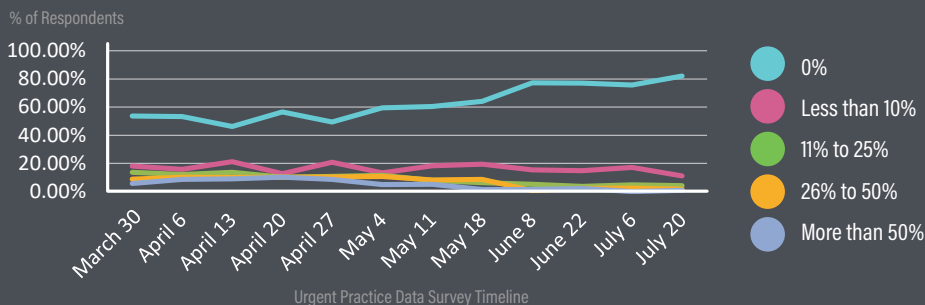
## What does your patient volume look like compared to your normal (pre-COVID-19) patient volume?



### METRICS ON THE MOVE:

A “Decrease of more than 50%” in patient volume has steadily dropped from 53% in the week of March 30th to 2% in the week of July 20th, while a “Decrease of 25% or less” in patient volume has risen from 10% in the week of March 30th to 43% in the week of July 20th.

## What percentage of your pre-COVID-19 staff in total have you already laid-off or furloughed or do you anticipate needing to lay-off or furlough in the next two weeks?

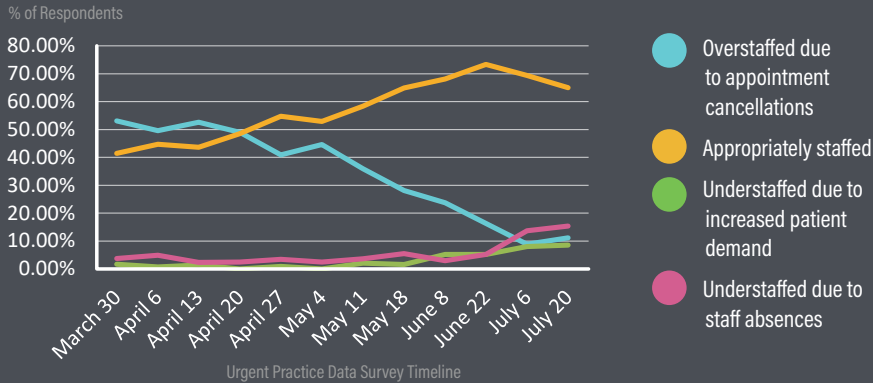


### METRICS ON THE MOVE:

The percentage of practices experiencing some amount of lay-off or furlough has decreased over the course of the survey, with the percentage of practices reporting “0%” lay-off/furlough climbing through the course of the survey to 82% for the week of July 20th.

# Urgent Practice Data Survey Sixteen Week Summary

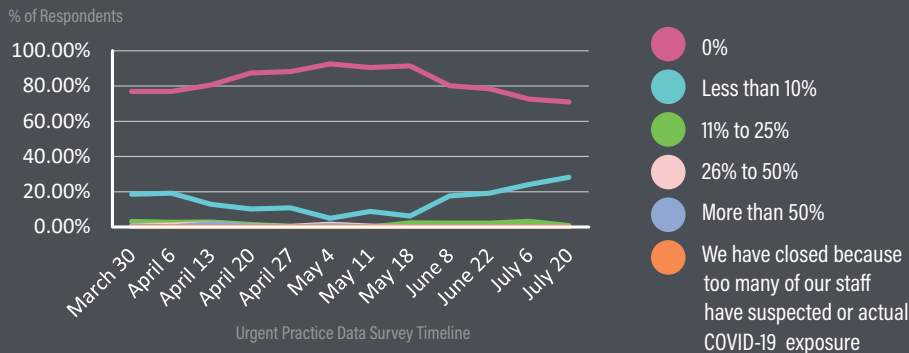
## Do you expect to have sufficient staffing to meet your needs for the next week?



### METRICS ON THE MOVE:

The majority of respondents continue to indicate their practices are "Appropriately staffed" but in recent weeks this metric has taken a 8% dip while "Understaffed due to staff absences" has seen an increase from 5% the week of June 22nd to 15% the week of July 20th.

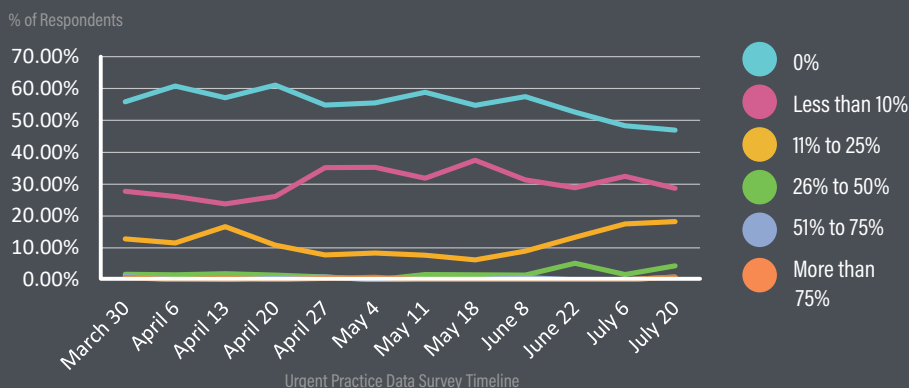
## What percentage of your current clinical staff was NOT able to attend work today because of suspected or actual COVID-19 exposure?



### METRICS ON THE MOVE:

In recent weeks, the percentage of practices reporting "0%" (not able to work) has been experiencing a decrease, while reporting of "Less than 10%" has been steadily climbing, from 6% the week of May 18th to 28% during the week of July 20th.

## What percentage of patient visits today were to address COVID-19-related issues (patient with potential symptoms, etc.)?

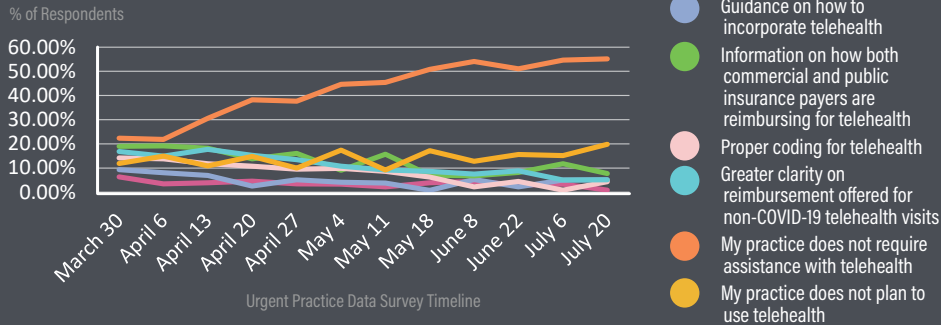


### METRICS ON THE MOVE:

The percentage of respondent practices reporting "0%" COVID-19 related patients has been decreasing while practices reporting "11% to 25%" of their patient visits have addressed COVID-19 related issues has increased from 9% the week of June 8th to 18% for the week of July 20th.

# Urgent Practice Data Survey Sixteen Week Summary

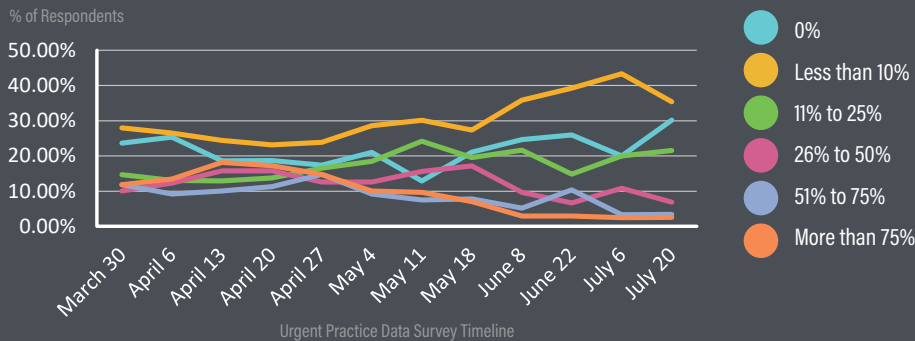
## What would be most helpful to you in implementing or improving the operation of telehealth in your practice?



### METRICS ON THE MOVE:

The percentage of respondents reporting "My practice does not require assistance with telehealth" has steadily risen through the course of the survey, from 22% the week of March 30th to 45% the week of May 11th to 55% the week of July 20th.

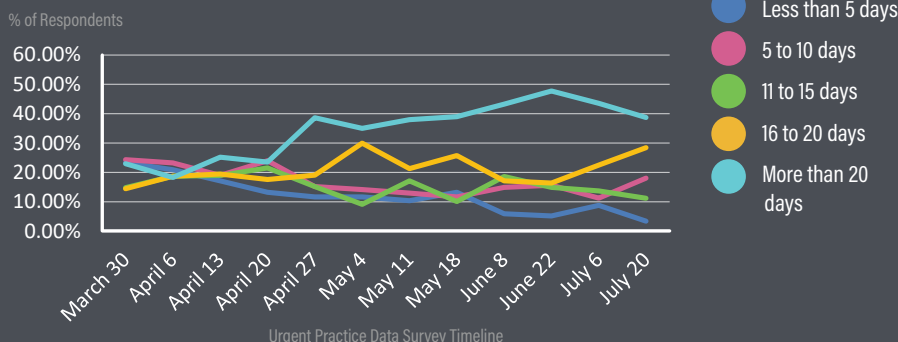
## What percentage of the patients treated by your practice today were treated via telehealth?



### METRICS ON THE MOVE:

The majority of respondents continue to report treating less than 10% of their patients via telehealth ("0" or "Less than 10%"). The percentage of respondents reporting "51% to 75%" and "More than 75%" both started at 12% the week of March 30th but have both dropped to 3% the week of July 20th.

## Considering the needs of your entire practice, how many days of Personal Protective Equipment (PPE) do you have remaining?



### METRICS ON THE MOVE:

The percentage of respondents reporting "More than 20 days" of PPE has climbed through the life of the survey but peaked at 48% the week of June 22nd and has trended downward since. The percentage of respondents indicating "Less than 5 days" of PPE has dropped from 23% (week of March 30th) to 3% (week of July 20th).